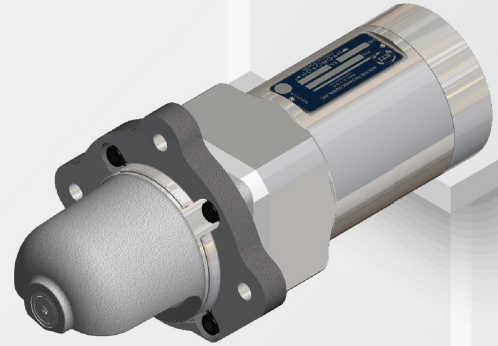


A SERIES

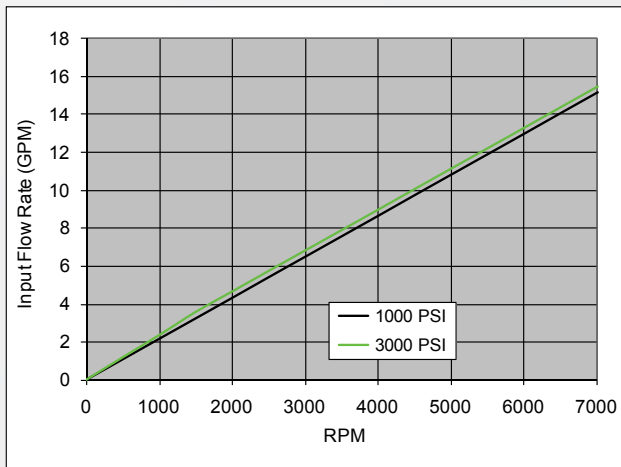
HYDRAULIC STARTERS

Product Specifications

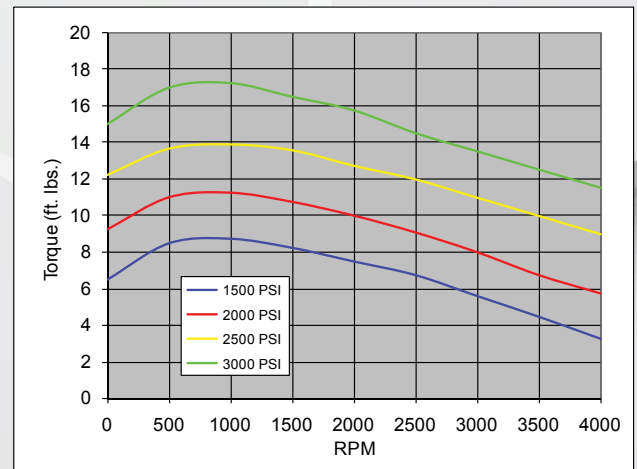
Rotation:	CW/ CCW
Motor housing:	Aluminum
Pinion housing:	Aluminum
Barrel:	Ductile Iron
Piston:	Steel Alloy
Number of pistons:	7
Displacement:	0.50 in ³ /REV
Speed range:	0-7000 RPM
Drive type:	Inertia
Maximum working pressure:	3000 PSI
Duty cycle:	Intermittent
Maximum torque:	15 Ft-lbs
Weight:	11.0 lbs
Overall volumetric efficiency:	92%
Recommended fluid:	Red hydraulic fluid (MIL-H-5606)
Inlet Port:	SAE-8
Outlet Port:	SAE-8
Service Kit:	KT-207387
Barrel Kit:	KT-208826



Flow vs. Speed



Torque vs. Speed



General Dimensions - PN: A1-12D2150-1A200 shown below

