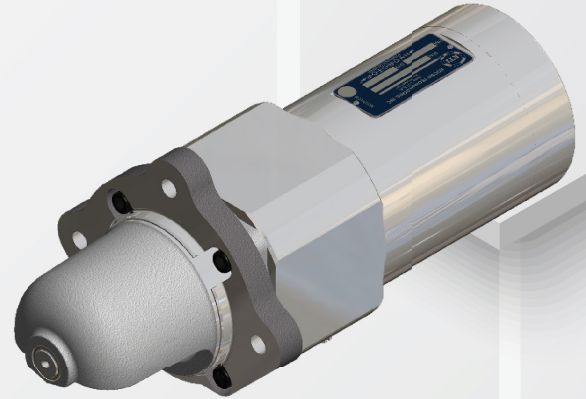


# B SERIES

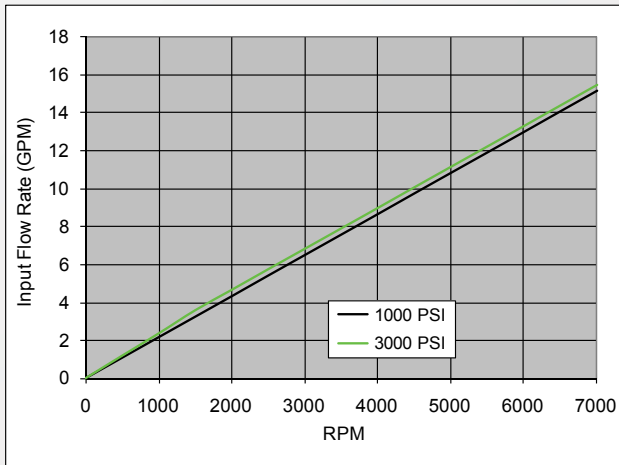
## HYDRAULIC STARTERS

### Product Specifications

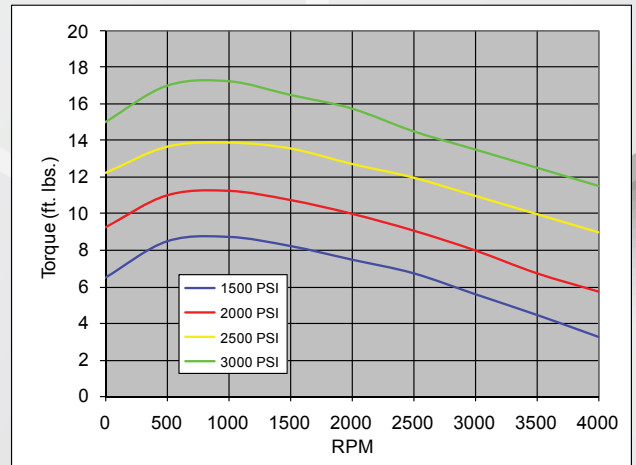
Rotation:	CW/ CCW
Motor housing:	Aluminum
Pinion housing:	Aluminum
Barrel:	Ductile Iron
Piston:	Steel Alloy
Number of pistons:	7
Displacement:	1.35 in <sup>3</sup> /REV
Speed range:	0-7000 RPM
Drive type:	Inertia
Maximum working pressure:	3000 PSI
Duty cycle:	Intermittent
Maximum torque:	45 Ft-lbs
Weight:	17.0 lbs
Overall volumetric efficiency:	92%
Recommended fluid:	Red hydraulic fluid (MIL-H-5606)
Inlet Port:	SAE-8
Outlet Port:	SAE-8
Available Flanges:	SAE-1, SAE-2, SAE-3, SAE-4, Custom
Service Kit:	KT-207387
Barrel Kit:	KT-208827



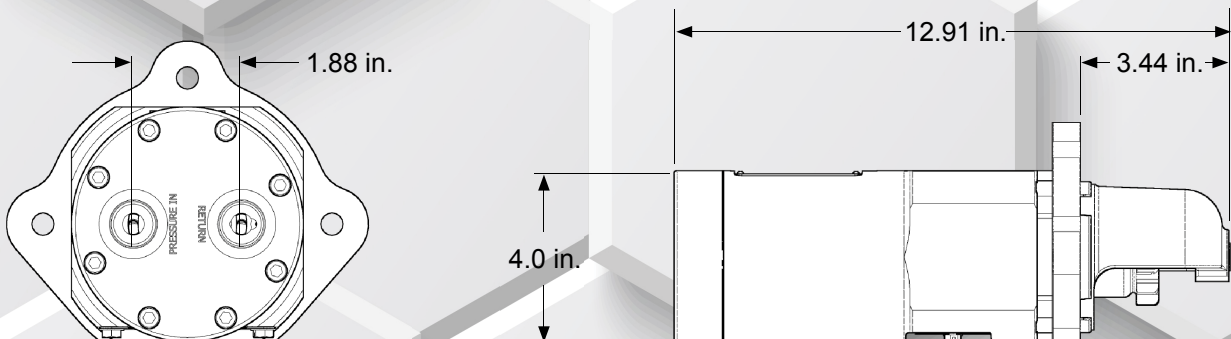
### Flow vs. Speed



### Torque vs. Speed



### General Dimensions- Part # B1-11C2183-3A200 shown below



SSBSERIES\_D